

LMP 950-951 series

Maximum working pressure up to 3 MPa (30 bar) - Flow rate up to 2400 l/min



LMP 950-951 GENERAL INFORMATION

Description

Technical data

Low & Medium Pressure filters

Maximum working pressure up to 3 MPa (30 bar)
Flow rate up to 2400 l/min

LMP950 is a range of low pressure filter with large filtration surface mainly suitable for lubrication, off-line filtration of the reservoirs and filtration equipment.

They are directly connected to the lines of the system through the hydraulic fittings.

Available features:

- Flanged connections up to 4", for a maximum flow rate of 2400 l/min
- In line or 90° connections, to meet any type of application
- Base-mounting design, for ease of the replacement of the filter element
- Fine filtration rating, to get a good cleanliness level into the system
- Water removal elements, to remove the free water from the hydraulic fluid. For further information, see the Contamination Management document and the dedicate leaflet.
- Bypass valve, to relieve excessive pressure drop across the filter media
- Vent ports, to avoid air trapped into the filter going into the system
- Drain ports, to remove the fluid from the housing prior the maintenance work
- Visual, electrical and electronic differential clogging indicators

Common applications:

- Off-line filtration of reservoirs
- Filtration systems
- Lubrication systems

Filter housing materials

- Head: Anodized Aluminium
- Housing: Anodized Aluminium
- Bypass valve: Anodized Aluminium

Pressure

- Test pressure: 4.5 MPa (45 bar)
- Min. Burst pressure: 9 MPa (90 bar)
- Pulse pressure fatigue test: 1 000 000 cycles with pressure from 0 to 3 MPa (30 bar)

Bypass valve

- Opening pressure 0.35 MPa (3.5 bar) ±10%
- Other opening pressures on request.

Filter element features

| Filter | | Filter element | |
|--|--------------|----------------|--------|
| LMP 950-951 | | CU | |
| Δp Element type | | | |
| Element media | Construction | Δp Series | Δp |
| A - Microfiber | Standard | N | 20 bar |
| M - Wire mesh | Standard | N | 20 bar |
| P - Paper | Standard | N | 20 bar |
| <i>Please see ordering code tables to check element Δp series availability based on filter features.</i> | | | |
| Flow direction through the filter element: | | | |
| From OUT to IN | | | |

Seals

- Standard NBR series A
- Optional FPM series V

Connections

- LMP 950: In-line Inlet/Outlet
- LMP 951: 90° Inlet/Outlet

Temperature

From -25 °C to +110 °C

Note

LMP 950 - 951 filters are provided for vertical mounting

Weights [kg] and volumes [dm³]

| Filter series | Weights [kg] | | | Volumes [dm ³] | | |
|--------------------|--------------|------|------|----------------------------|----|----|
| | Length | 2 | 3 | Length | 2 | 3 |
| LMP 950-951 | | 25.1 | 33.5 | | 15 | 28 |

GENERAL INFORMATION LMP 950-951

Flow rates [l/min]

| Filter series | Length | Filter element design - N Series | | | | | |
|---------------|--------|----------------------------------|------|------|------|------|-------------------|
| | | A03 | A06 | A10 | A16 | A25 | M25 M60 M90 |
| LMP 950 | 2 | 613 | 756 | 953 | 1219 | 1515 | 2170 |
| | 3 | 1148 | 1219 | 1502 | 1713 | 1808 | 2293 |
| LMP 951 | 2 | 635 | 789 | 1007 | 1308 | 1649 | 2420 |
| | 3 | 1226 | 1308 | 1634 | 1881 | 1993 | 2566 |

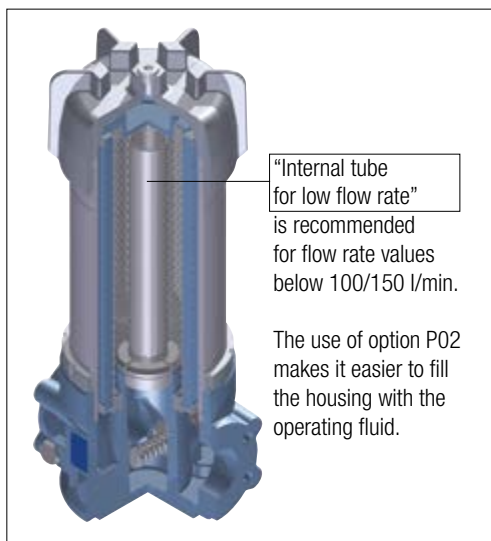
Maximum flow rate for a complete low and medium pressure filter with a pressure drop $\Delta p = 0.7$ bar.

The reference fluid has a kinematic viscosity of 30 mm²/s (cSt) and a density of 0.86 kg/dm³.

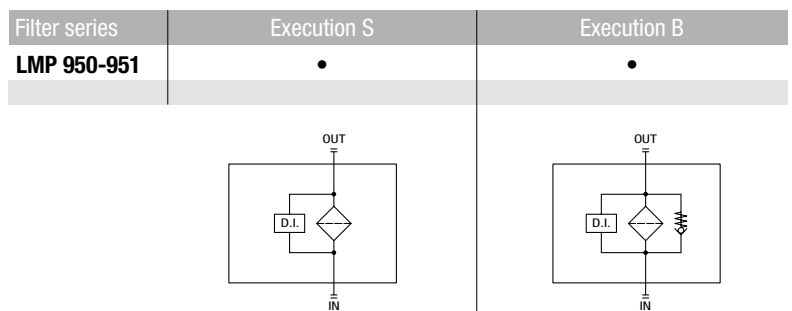
For different pressure drop or fluid viscosity we recommend to use our selection software available on www.mpfiltri.com.

You can also calculate the right size using the formulas present on the FILTER SIZING paragraph at the beginning of the full catalogue or at the beginning of the filter family brochure. Please, contact our Sales Department for further additional information.

Execution P02

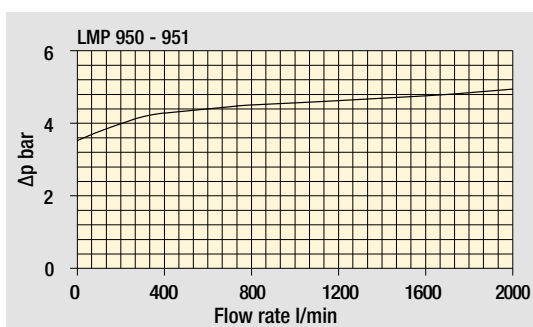
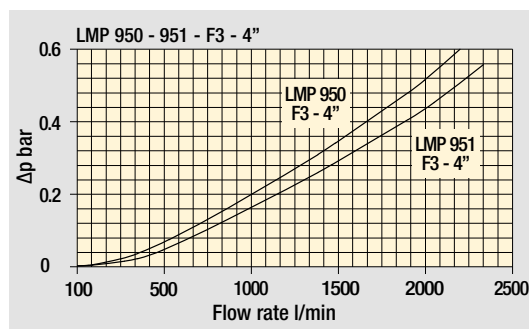
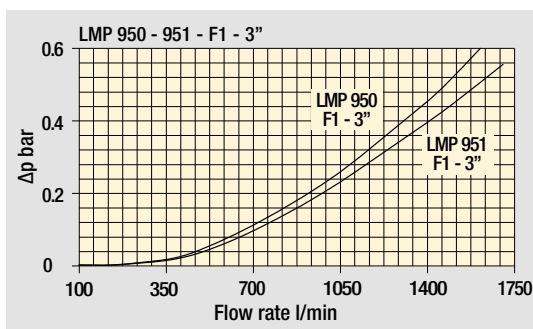


Hydraulic diagram



Pressure drop

Filter housings Δp pressure drop



Bypass valve pressure drop

The curves are plotted using mineral oil with density of 0.86 kg/dm³ in compliance with ISO 3968. Δp varies proportionally with density.

LMP 950-951

Designation & Ordering code

COMPLETE FILTER

| | | | | | | | | |
|--|--------------------------------------|---|----------|----------|-----------|------------|----------|------------|
| Series and size LMP950 LMP951 | Configuration example: LMP951 | 2 | B | A | F2 | A10 | N | P01 |
| Length 2 3 | | | | | | | | |
| Bypass valve S Without bypass B With bypass 3.5 bar | | | | | | | | |
| Seals and treatments A NBR V FPM | | | | | | | | |
| Connections F1 3" SAE 3000 psi/M F2 3" SAE 3000 psi/UNC F3 4" SAE 3000 psi/M F4 4" SAE 3000 psi/UNC | | | | | | | | |
| Filtration rating (filter media) | | | | | | | | |
| A03 Inorganic microfiber 3 µm | M25 Wire mesh 25 µm | | | | | | | |
| A06 Inorganic microfiber 6 µm | M60 Wire mesh 60 µm | | | | | | | |
| A10 Inorganic microfiber 10 µm | M90 Wire mesh 90 µm | | | | | | | |
| A16 Inorganic microfiber 16 µm | | | | | | | | |
| A25 Inorganic microfiber 25 µm | | | | | | | | |
| WA025 Water absorber inorganic microfiber 25 µm | | | | | | | | |
| | Element Δp N 20 bar | Execution P01 MP Filtri standard P02 With internal tube for low flow rate Pxx Customized | | | | | | |

FILTER ELEMENT

| | | | | | | |
|--|--------------------------------------|--|------------|----------|----------|------------|
| Element series and size CU950 | Configuration example: CU950 | 2 | A10 | A | N | P01 |
| Element length 2 3 | | | | | | |
| Filtration rating (filter media) | | | | | | |
| A03 Inorganic microfiber 3 µm | M25 Wire mesh 25 µm | | | | | |
| A06 Inorganic microfiber 6 µm | M60 Wire mesh 60 µm | | | | | |
| A10 Inorganic microfiber 10 µm | M90 Wire mesh 90 µm | | | | | |
| A16 Inorganic microfiber 16 µm | | | | | | |
| A25 Inorganic microfiber 25 µm | | | | | | |
| WA025 Water absorber inorganic microfiber 25 µm | | | | | | |
| Seals A NBR V FPM | | | | | | |
| | Element Δp N 20 bar | Execution P01 MP Filtri standard Pxx Customized | | | | |

CLOGGING INDICATORS

See page 784

| |
|--|
| DEA Electrical differential pressure indicator |
| DEM Electrical differential pressure indicator |
| DEU Electrical differential pressure indicator |
| DLA Electrical / visual differential pressure indicator |
| DLE Electrical / visual differential pressure indicator |

| |
|--|
| DTA Electronic differential pressure indicator |
| DTI I-O Link electronic differential pressure indicator |
| DVA Visual differential pressure indicator |
| DVM Visual differential pressure indicator |

PLUGS

See page 807

| |
|----------------|
| T2 Plug |
|----------------|

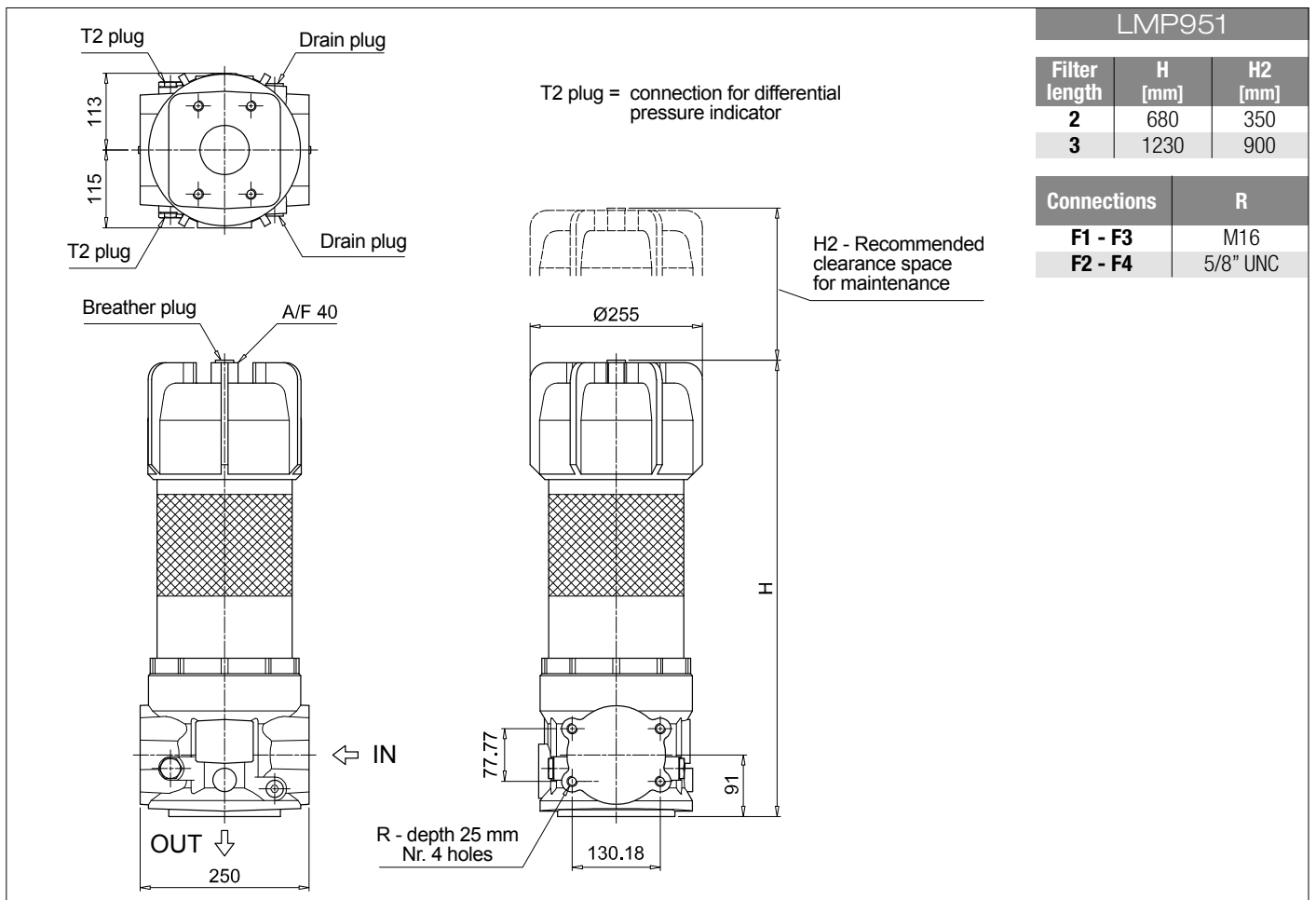
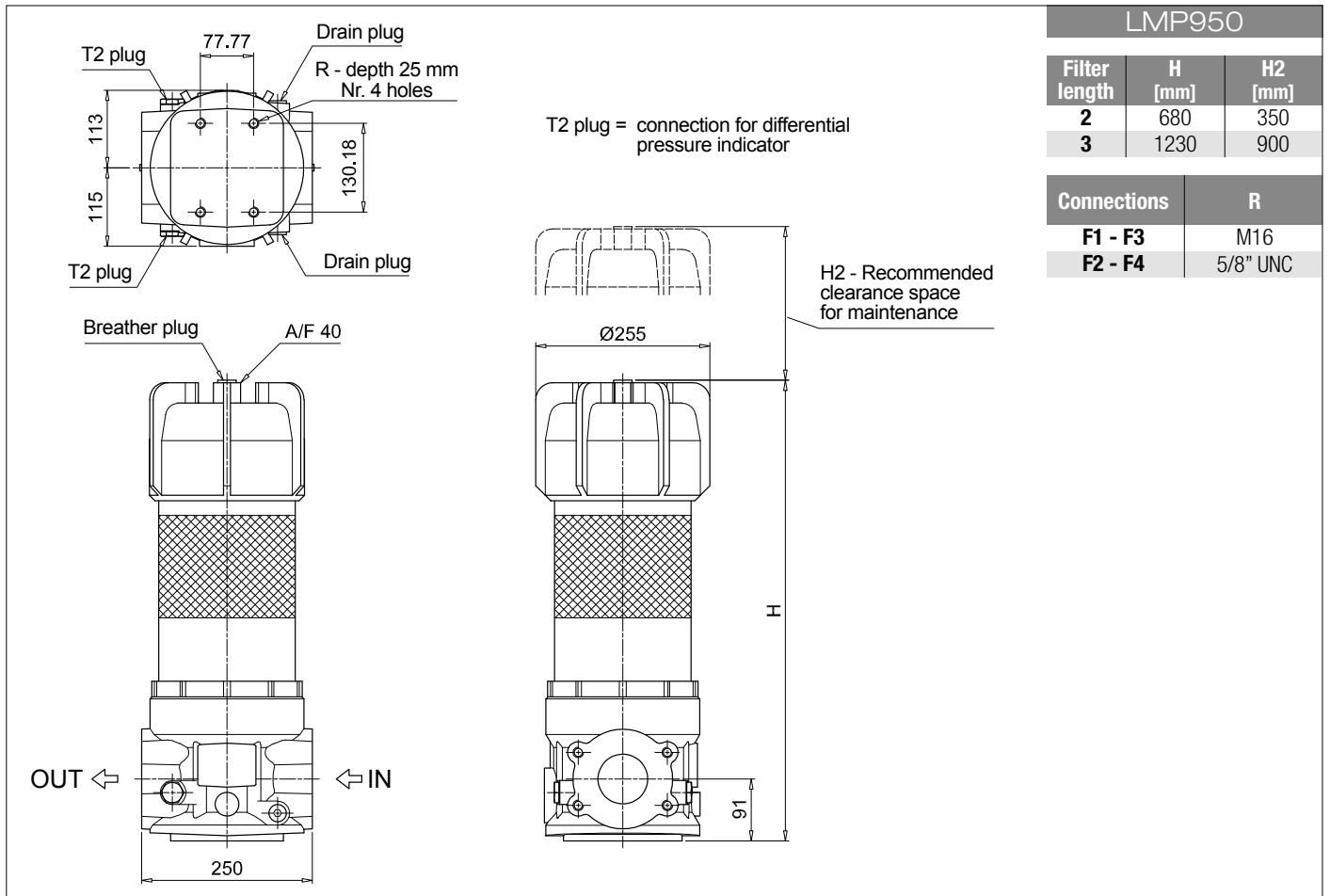
ACCESSORIES

See page 486

| |
|----------------------------|
| CFA Retaining clamp |
|----------------------------|

LMP 950-951

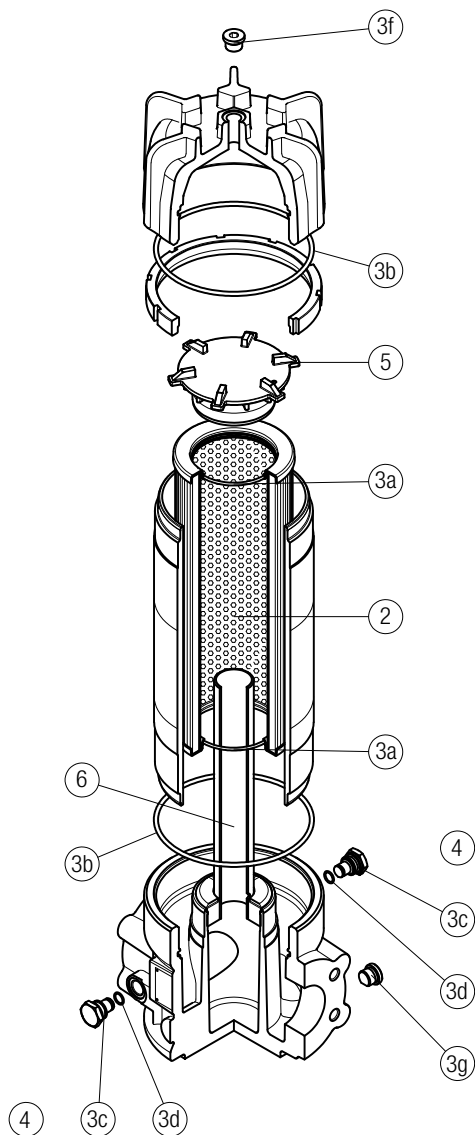
Dimensions



LMP 950-951 SPARE PARTS

Order number for spare parts

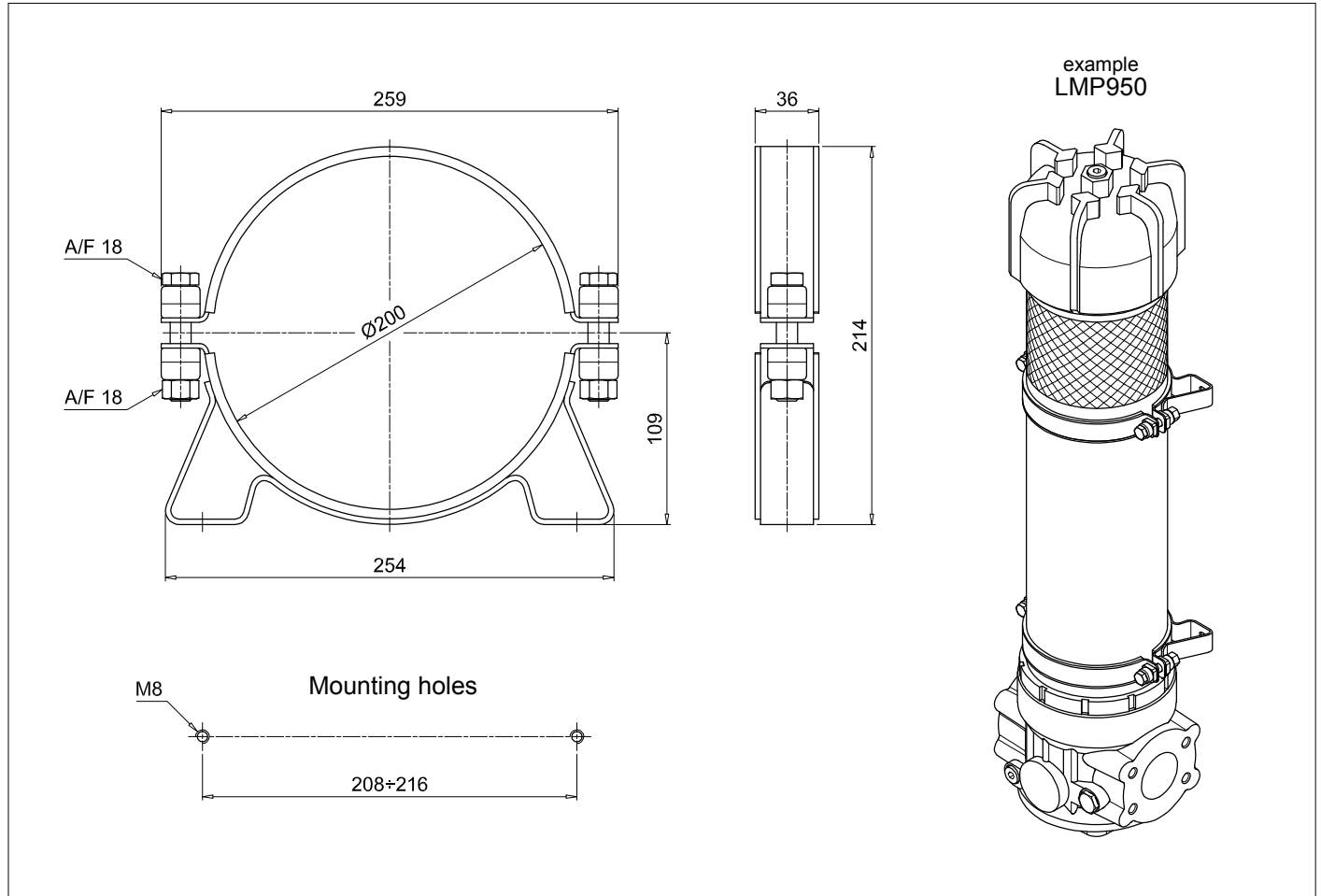
LMP 950 - 951



| Item: | Q.ty: 1 pc. | | Q.ty: 1 pc. | | Q.ty: 2 pcs. | | Q.ty: 1 pc. | | Q.ty: 1 pc. | |
|------------------------|-----------------|----------------------|-------------|---------------------------|--------------|----------------|-------------|--|-------------|--|
| Filter series | Filter element | Seal Kit code number | | Indicator connection plug | | Housing spigot | | Internal tube for low flow rate, exec. P02 | | |
| LMP 950-951 length 2-3 | See order table | NBR | FPM | NBR | FPM | no bypass | with bypass | length 2 | length 3 | |
| | | 02050367 | 02050368 | T2H | T2V | 01044106 | 02001379 | 02025032 | 02025033 | |

Accessories

RETAINING CLAMP



| | | | | | | |
|------------------|--------------------|------------------------|------------|-----------|----------|------------|
| Series | | Configuration example: | CFA | 20 | M | P01 |
| CFA | Retaining clamp | | | | | |
| Size | | | | | | |
| 20 | | | | | | |
| Screw | | | | | | |
| M | Metric | | | | | |
| Execution | | | | | | |
| P01 | MP Filtri standard | | | | | |