

SCS series

Metal air breather filter



Technical data

Air breathers & Filler plugs

Metal air breather filter

Flow rate up to 1330 l/min

SCS is a range of air breathers for protection of the tank against the solid contamination contained into the air.

They are composed of a spin-on filter can screwed on a connection tube, directly fitted on the tank. They are usually directly fitted on the tank.

Available features:

- Weld or flanged connection, for a maximum flow rate of 1415 l/min
- Fine cellulose and microfibre filtration, to get a good cleanliness level into the reservoir

Common applications:

- Mobile machines (construction and agriculture machines)
- Industrial equipment

Flow rate Δp 0.02 bar

	Flow rate [l/min]			
	Filtration rating	P10	A03	A10
SCS050	550	515	530	
SCS070	550	515	530	
SCS100	1415	1300	1330	
SCS150	1415	1300	1330	

Materials

Riser: Galvanized steel

Temperature

From -25 °C to +100 °C

Weight

SCS050...G1: 0,200 kg
 SCS050...G2: 0,265 kg
 SCS100...G1: 0,450 kg
 SCS100...G2: 0,645 kg

CS/CG050: 0,73 kg
 CS/CG070: 0,95 kg
 CS100: 1,3 kg
 CS150: 1,6 kg
 CG100: 1,3 kg
 CG150: 1,6 kg



Designation & Ordering code

METAL AIR BREATHER FILTER

Series and size				Configuration example 1 : SCS050 C G2 V P01						
SCS050	SCS070	SCS100	SCS150	Configuration example 2 : SCS150 C G2 A10 V P01						
Connections to the tank										
C	Weld riser									
F	Screwed flange									
Threaded connection		SCS050 - 070		SCS100 - 150						
G1	Connection ISO 228	G 3/4"	G 1 1/4"							
G2	Connection U.S. standard	1" - 12 UNF	1 1/2" - 16 UN							
Filtration rating		Size:	050	070	100	150				
Without filter element			•	•	•	•				
A03	Inorganic microfiber	3 µm	•	•	•	•				
A10	Inorganic microfiber	10 µm	•	•	•	•				
P10	Resin impregnated paper	10 µm	•	•	•	•				
Seals										
A	NBR									
V	FPM									
Execution										
P01	MP Filtri standard									
Pxx	Customized									

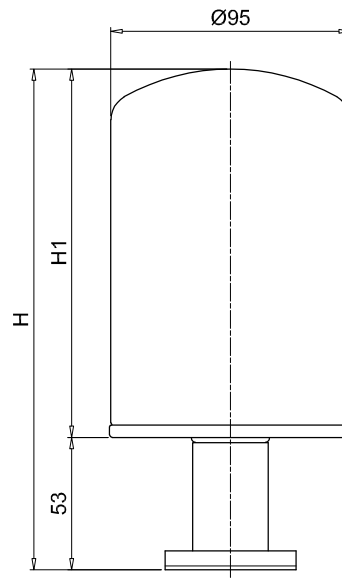
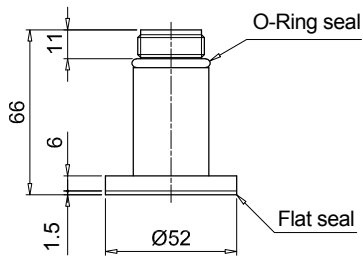
FILTER ELEMENT

Filter element series		Threaded connection:		Configuration example : CG 150 A10 V P01					
CS	Connection ISO 228	G1	•						
CG	Connection U.S. standard	G2	•						
Filter element size									
050	070	100	150						
Filtration rating									
A03	Inorganic microfiber	3 µm							
A10	Inorganic microfiber	10 µm							
P10	Resin impregnated paper	10 µm							
Seals									
A	NBR								
V	FPM								
Execution									
P01	MP Filtri standard								
Pxx	Customized								

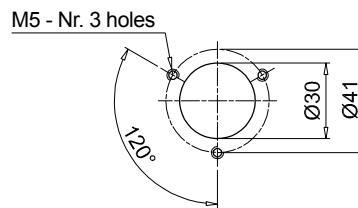
SCS050-070

Screwed flange

Size	H [mm]	H1 [mm]
050	199	146
070	263	210



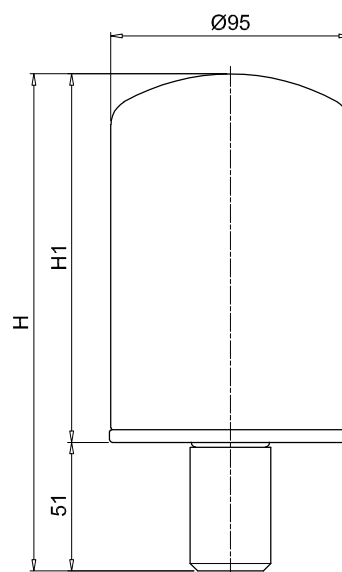
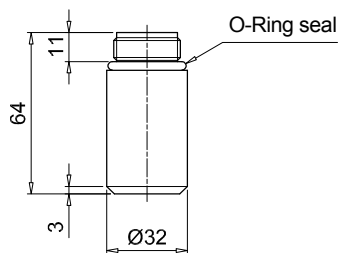
Holes on the tank



SCS050-070

Weld riser

Size	H [mm]	H1 [mm]
050	197	146
070	261	210



Dimensions

