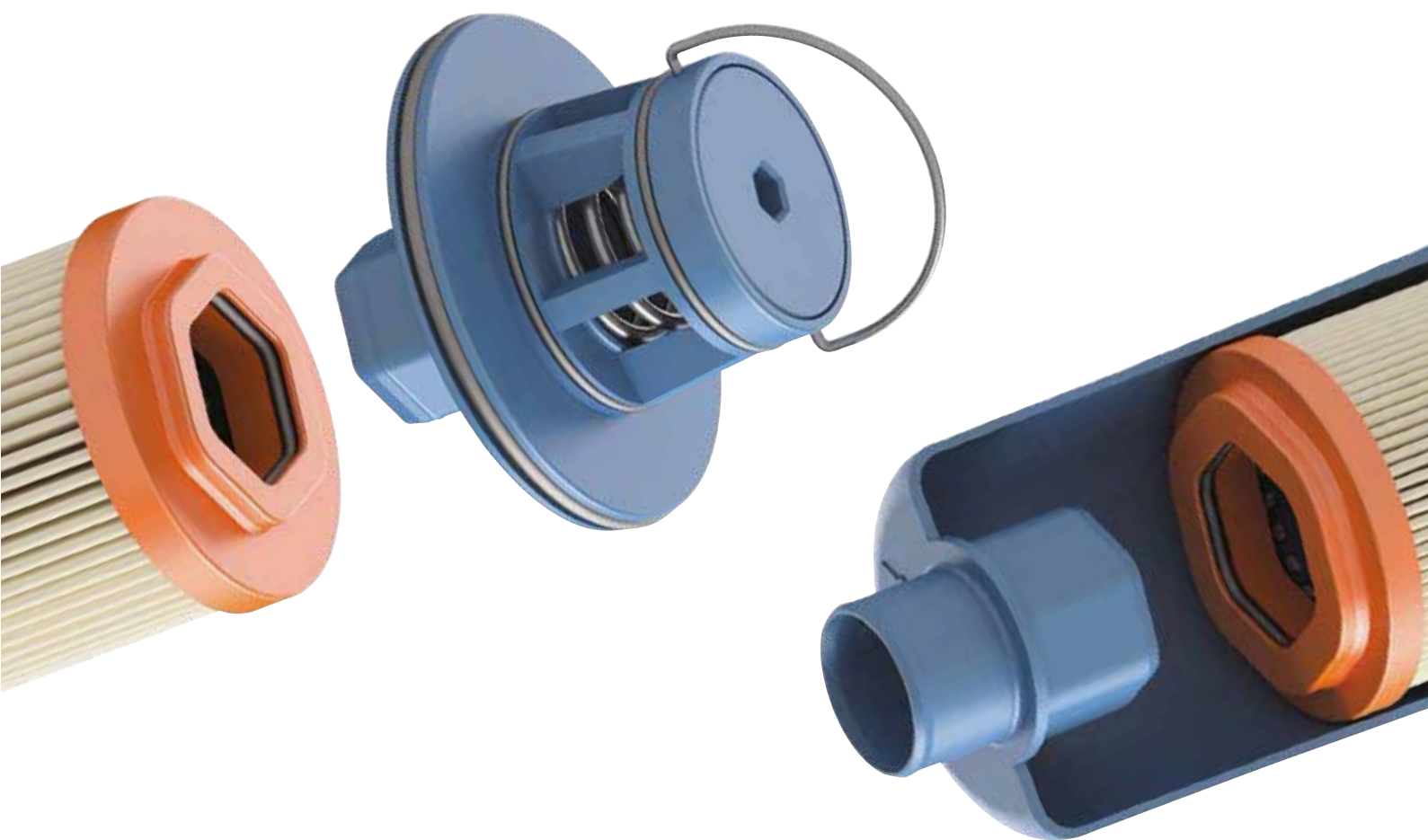


MPFX, MPTX, MRSX

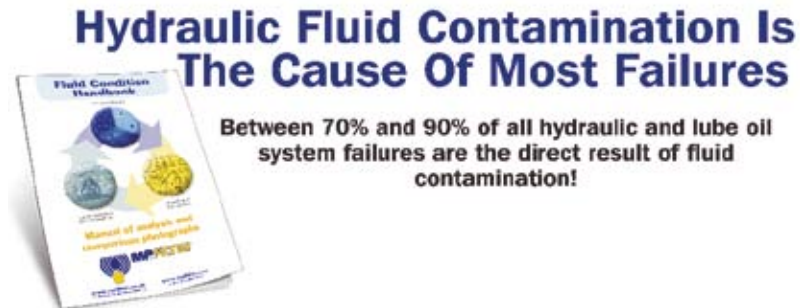
The New Filter Concept



PASSION TO PERFORM



The Massachusetts Institute of Technology - M.I.T. Boston (US) have established, according to the study made by Dr. E. Rabinowicz, that the presence of solid particles in the hydraulic fluid is the most important factor influencing the reliability and life of fluid systems.



THE TRUE VALUE OF THE MACHINE IS THE RIGHT FUNCTIONALITY OF ITS HYDRAULIC SYSTEM

DO YOU KNOW HOW MANY FILTER ELEMENTS ARE SUPPLIED WITH EACH MACHINE YOU SELL EVERY YEAR?

DO YOU KNOW HOW MANY FILTERS ELEMENTS ARE REPLACED IN YOUR MACHINES EVERY YEAR?

DO YOU KNOW THE DURATION OF LIFE OF YOUR MACHINE?

TO ENSURE MACHINE RELIABILITY, QUALITY AND EFFICIENCY, THE FILTER ELEMENT IS THE COMPONENT TO BE REPLACED!



PROTECT LIFE AND PERFORMANCE OF YOUR MACHINE BY ONLY USING ORIGINAL SPARE PARTS!



THE CONCEPT

MPFX MPTX MRSX

Tank Top Mounted Return and Return/Suction filters series specifically designed for all mobile hydraulic systems in utility vehicles, agricultural and construction machinery



Filter element featuring our UNIQUE end cap with polygonal design.



UNIQUE polygonal spigot fitting within the filter bowl.

The products identified as MPFX, MPTX, MRSX, MFBX, MFX and RSX are protected by:

Italian Patent n° 102014902261205

European Patent n° 16181725.9

Canadian Patent n° 2,937,258

and by the following patent application:

US Patent Pending n° 15/224,337

Protects the machine from improper use of non-original products

Increases the reliability of the machine

Helps OEMs to increase RELIABILITY and PROFIT

MPFX

Return Filter

- Max. working pressure 8 bar (116 psi)
- Flow rates up to 900 l/min (238 gpm), oil flow external to internal
- Microfibre filter element, with absolute filtration rating in compliance with new MULTIPASS TEST - ISO 16889
- Paper filter element, with nominal filtration rating using mineral oil according to ISO 2943
- Electrical/optical contamination indicator available as accessory
- Other options/accessories: extension pipe, diffuser for the oil outlet, multiple inlet connections for several sizes

All technical specifications and additional features relating to the MPFX are completely interchangeable with the MPF series.



Size	Standard Length			
	1	2	3	4
030	●			
100-104-110	●	●	●	●
181-182-184	●	●		
191-192-194		●		
400-410-450-451	●	●	●	
750	●			

MPTX

Return Filter

- Max. working pressure 8 bar (116 psi)
- Flow rates up to 300 l/min (79 gpm), oil flow external to internal
- Microfibre filter element, with absolute filtration rating in compliance with new MULTIPASS TEST - ISO 16889
- Paper filter element, with nominal filtration rating using mineral oil according to ISO 2943
- Simple element replacement
- Electrical/optical contamination indicator available as accessory
- Other options/accessories: oil dipstick, extension pipe, diffuser for the oil outlet, multiple inlet connections for several sizes

All technical specifications and additional features relating to the MPTX are completely interchangeable with the MPT series.



Size	Standard Length			
	1	2	3	4
025-027	●	●	●	
110-114-116 120	●	●	●	●

MRSX

Return/Suction Filter

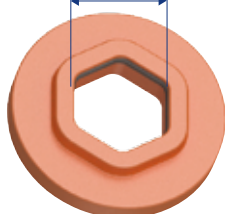
- Max. working pressure 10 bar (145 psi)
- Flow rates up to 250 l/min (66 gpm), oil flow external to internal
- Microfibre filter element, with absolute filtration rating in compliance with new MULTIPASS TEST - ISO 16889
- Specifically designed for closed loop systems within Hydrostatic Drives



Size	Standard Length			
	1	2	3	4
116	•	•		
165-166	•	•	•	

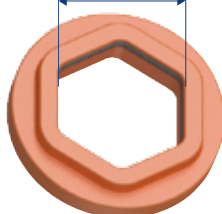
Standard design

Standard size

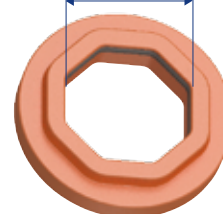


Customised design

Special size



Special shape and size



Branded external wrap

Standard design



Customised design



Possible Customisation



WORLDWIDE NETWORK



HEADQUARTERS

8 BRANCHES

OVER 300 DISTRIBUTORS

Germany
France
USA
Russian Federation

China
United Kingdom
India
Canada



PASSION TO PERFORM

www.mpfiltri.com